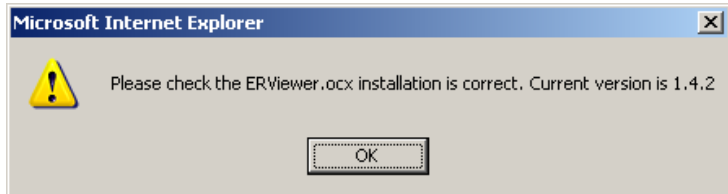
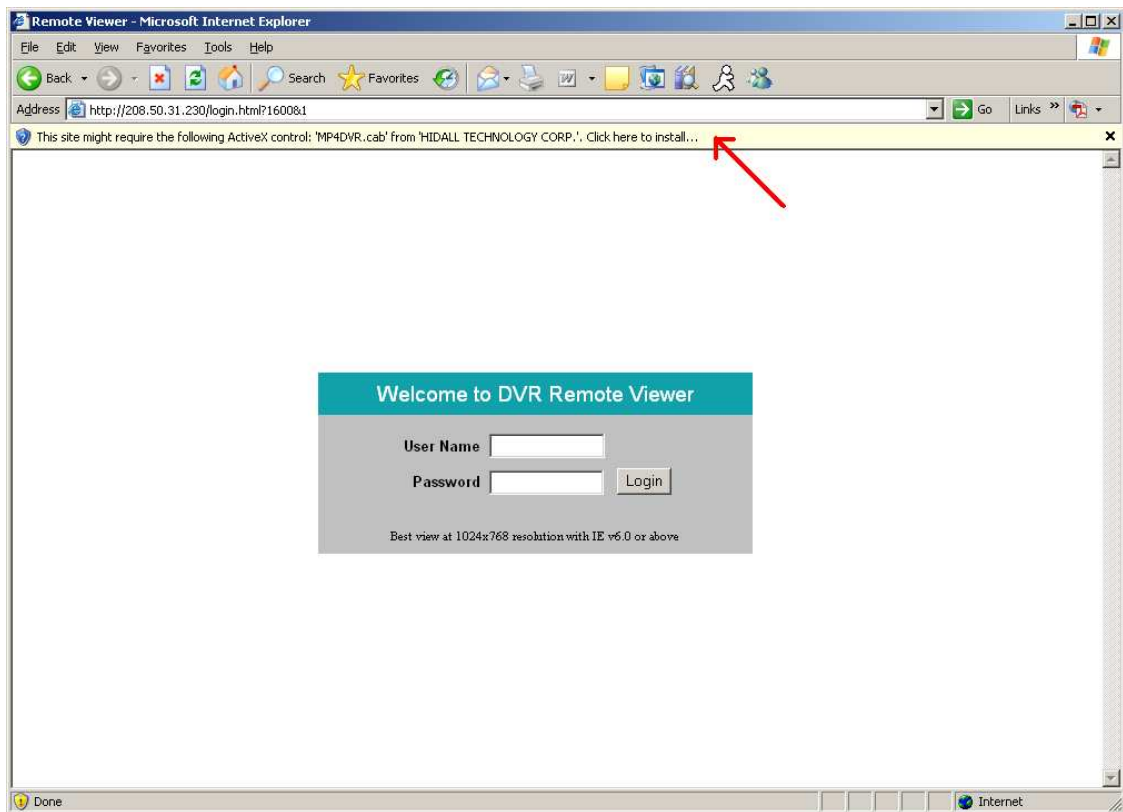


## Installing ActiveX Controls

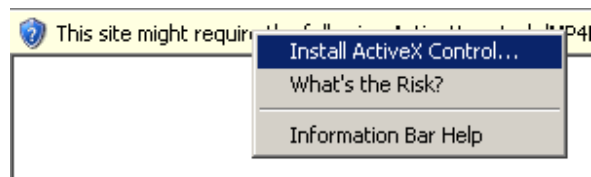
When you first connect to the DVR's IP address, you will see a pop-up alert. Click OK to close the window.



After a few seconds, you should see a screen like the one below. If you do not see a yellow bar like the one the arrow is pointing at, your security settings may be too high. If so, go to the section labeled "Enabling ActiveX Controls."



Right click on the yellow bar and select "Install ActiveX Control..."



Install the MP4DVR file when prompted to do so.



Type in the username and password and click Login to view the cameras.

Default username: admin

Default password: 11111111

A screenshot of a web page titled "Welcome to DVR Remote Viewer". The page has a teal header. Below the header, there are two input fields: "User Name" and "Password". To the right of the "Password" field is a "Login" button. At the bottom of the page, there is a note: "Best view at 1024x768 resolution with IE v6.0 or above".